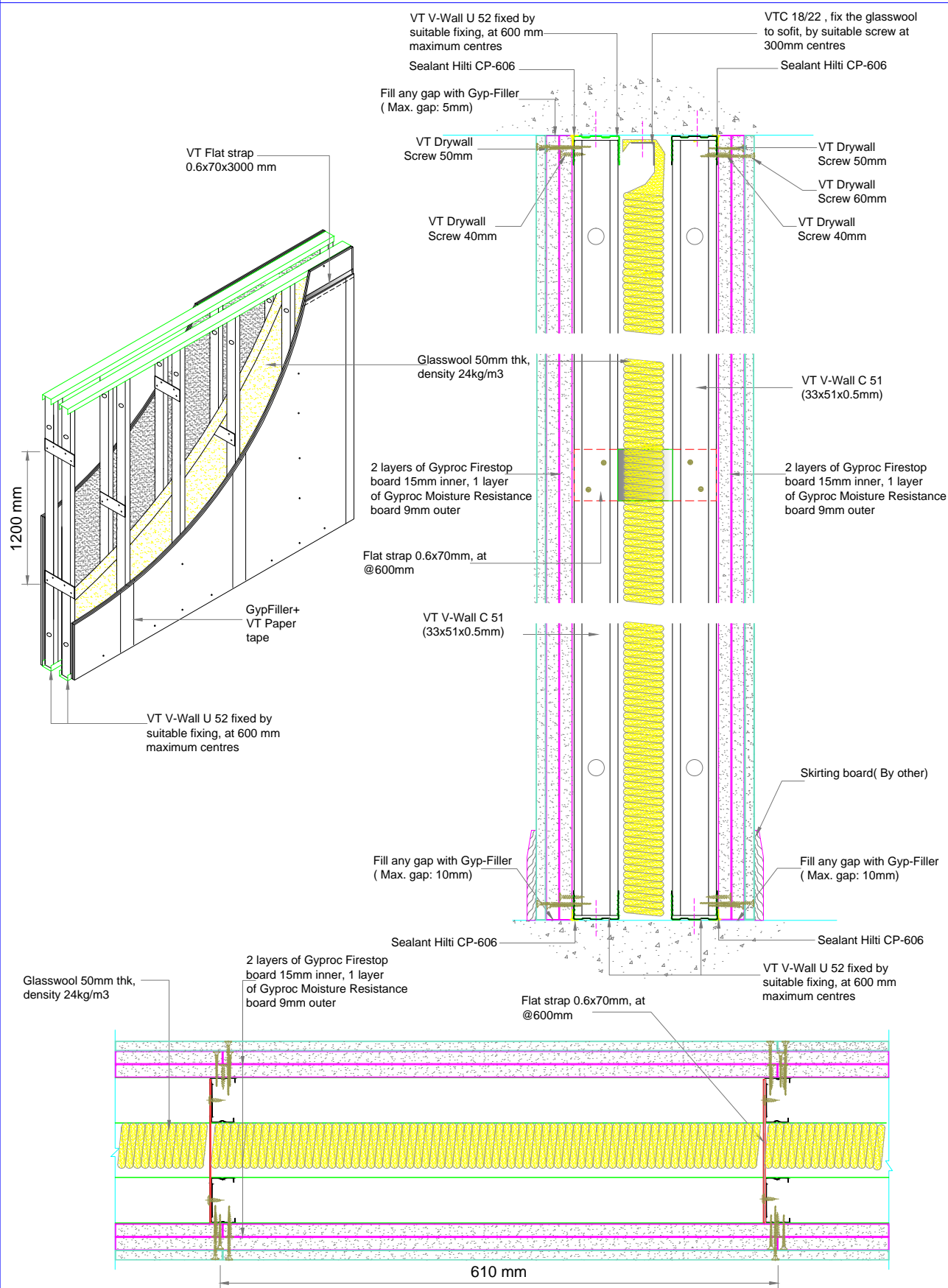




This drawing is provided free of charge and the details show are subject to the accuracy of the information provided to Saint-Gobain VietNam at the time the drawing was originally requested. The drawing should be approved by relevant authorities before use to ensure that it meets with their specific project requirements. It should also be read in conjunction with Saint-Gobain VietNam is current literature.

- A. The above system performances are based on the Laboratory test results conducted by third party accredited laboratories (contact Saint-Gobain VietNam for further information).
- B. The fire resistant and sound insulation performance claims are for imperforate partition walls, installed strictly in accordance with Saint-Gobain VietNam is recommendations including the use of specified Saint-Gobain VietNam & Vinh Tuong components throughout. Any variation to the specification should be confirmed in writing by Saint-Gobain VietNam prior to installation.
- C. Please note tested acoustic performance under site conditions is likely to be lower than laboratory test result due to differences in conditions, consult with Saint-Gobain VietNam for further information.



<b>System Name</b>	<b>DW7AQ2</b>
<b>Overall thickness (mm)</b>	<b>238</b>
<b>Fire resistance (min)</b>	<b>120</b>
<b>Sound insulation (dB)</b>	<b>60</b>
<b>Max.height (m)</b>	<b>7.5</b>
	<b>VT V-Wall C 51 (33x75x0.5mm)</b>
	<b>VT V-Wall U 52 (32x76x0.5mm)</b>
	<b>VT Drywall Screw 40(50,60)mm</b>
	<b>VT Screw metal to metal 13mm</b>
	<b>Jointing compound: Gyp-Filler</b>

 **Plasterboard Manufacturer**  
Saint-Gobain Viet Nam Ltd.,

 **Metal frame Manufacturer**  
Vinh Tuong Industrial Corporation

**Project title:** \_\_\_\_\_  
**Address:** \_\_\_\_\_

**Drawn by:** \_\_\_\_\_  
**Issue date:** \_\_\_\_\_

**Approved by:** \_\_\_\_\_  
**Drawing No.:** \_\_\_\_\_